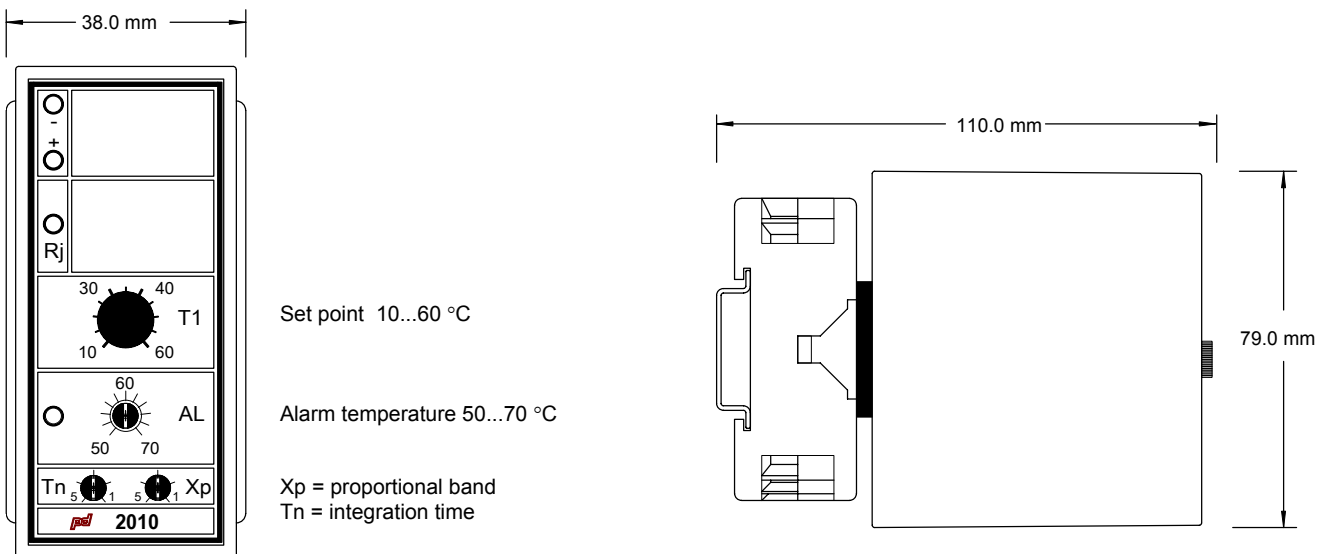


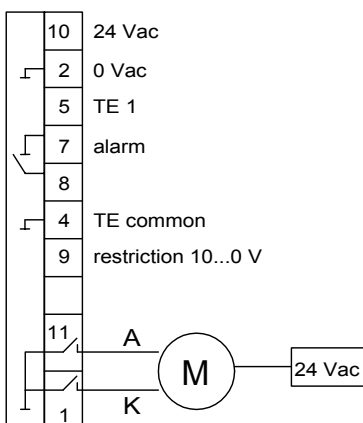
CONTROLLER PDS 2010

PDS 2010 regulates the temperature in the domestic water network or in the ventilating unit. One sensor can be incorporated with the controller. In addition, a signal of 10...0 V can be used as an input, which enables the controller to be force-controlled, e.g. with the adjusting frost guard. If the forced control is not required, it can be left unconnected. Based on the signal from the TE 1 sensor, the controller adjusts the valve motor until the desired temperature is achieved. The TE 1 sensor detects the temperature of supply water or supply air in the ventilating unit.

The restriction is indicated by a LED. The controller adjusts the motor with triac-outputs according to the PI control algorithm. A sudden change in the input will activate the output according to the proportional control. The integration eliminates the permanent deviation in accordance with the set integration time (Tn-trimmer).



Connection:



Technical data:

Supply voltage	24 Vac, 2 VA
Alarm relay	24 V, 0,1 A
Outputs	triacs 1 A, 24 Vac

Settings :

Set point	10...60 °C
Alarm temperature	50...70 °C
Proportional band	Xp = 1...5
Integration time	Tn = 1...5

Dimensions w x h x d	35 x 79 x 95 mm
----------------------	-----------------

Accessories:

Water temperature sensor	TENA 1000
Duct sensor	TEK 1000
Adjusting frost guard	USJ 24