

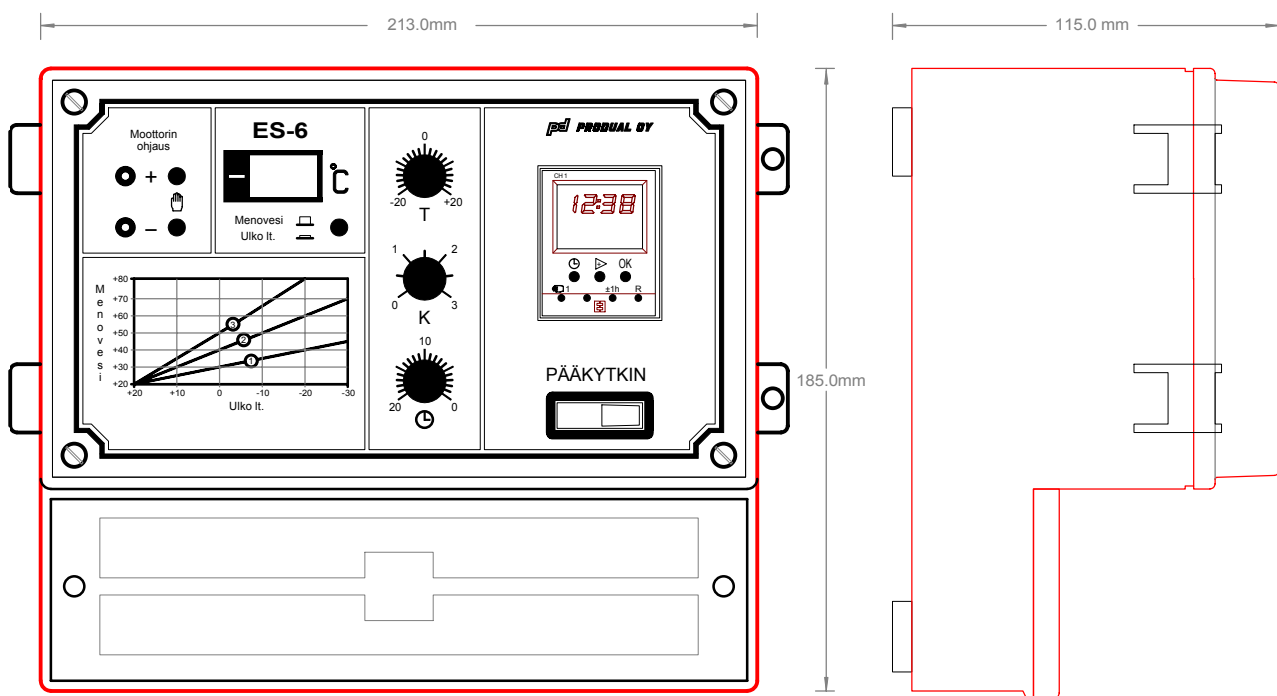
### CONTROL CENTRE ES 6 FOR CENTRAL HEATING SYSTEMS

ES 6 is a control centre for the radiators in central heating systems. When the outside temperature changes, ES 6 controls the supply water temperature in accordance with the pre-set heating characteristics.

The measured supply water and outside temperatures are shown in the digital display unit with an accuracy of 1 °C.

ES 6 controls the valve motor with potential-free relay contacts. These contacts can be incorporated with either a 24 V or 230 V valve motor.

The control centre can be equipped with a timer switch for night-time temperature drop (KKD 1 digit.).



#### Settings:

|                             |                   |
|-----------------------------|-------------------|
| Start point of curve        | T = +/- 20 °C     |
| Curve slope adjustment      | K = 0...3         |
| Night-time temperature drop | Timer = 0...20 °C |

#### Accessories:

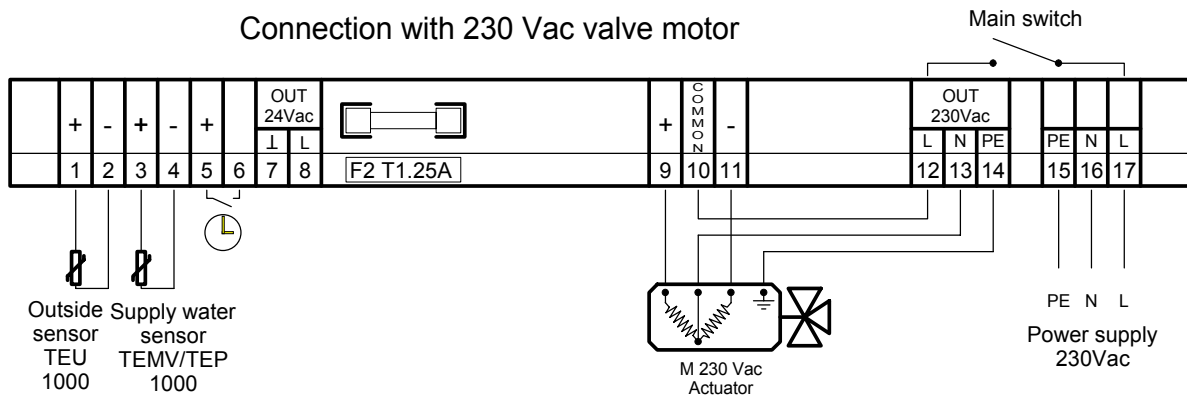
|                                 |           |
|---------------------------------|-----------|
| Supply water sensor             | TEMV 1000 |
| Surface sensor for supply water | TEP 1000  |
| Outside sensor                  | TEU 1000  |
| Timer                           | KKD 1     |

#### Technical data:

|                           |  |
|---------------------------|--|
| Supply voltage            | 230 Vac, 30 VA max.                          |
| Contacts                  | potential-free 10 A res.                     |
| Sensors                   | 1000 Ω/25 °C                                 |
| Temperature display       | -30...+99 °C<br>(outside/supply water temp.) |
| Housing                   | plastic IP 65                                |
| Dimensions<br>(w x h x d) | 213 x 185 x 115 mm                           |

## ES 6 CONNECTION

Connection with 230 Vac valve motor



Connection with 24 Vac valve motor

